



# *biodiverZOOM*

Krisztina MAJOR

2024, Budapest, Hungary (EU)



# ars poetica

**Krisztina MAJOR**

Hungary (EU)

I am concerned with the parallel between the constancy of nature and the development of technology. I am interested in the relationship between space-time and energy. I paint with free gestures to the repetitive rhythm of my subject music. In my abstract compositions, I zoom in on our external or internal world using the boundaries set by my mind as focal points, emphasizing them with parallel line motifs. The snapshots captured from my subconscious stand as a memento of the present, on the border between the inner silence and the mental noise generated by current social processes.





# the concept

## **nature versus hyperevolution**

I draw parallels between the traces of human damage and the primordial power of nature. The result of overproduction due to overconsumption threatens nature's capacity to regenerate, but if we confront it, it might take back power.

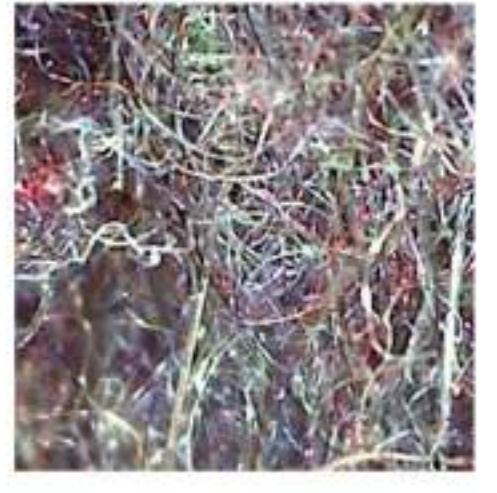
The hyperevolution of technology and artificial intelligence can help reverse the devastation if we teach it right. We shall turn it to nature's advantage for the sake of humanity.





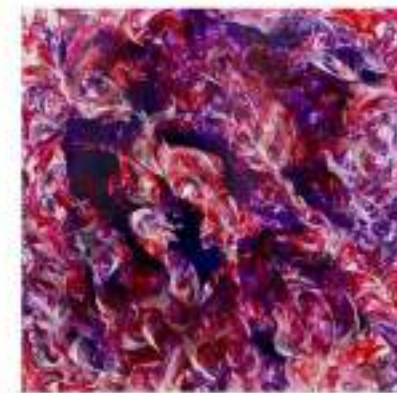
# *the inspiration*

Global environmental problems of arctic ice shrinkage, hyperurbanisation, pollution of soil, air and water. Plastic production, loss of biodiversity, acidification of the oceans, retreat of grassland, thinning of the ozone layer and their interaction.





# the artworks



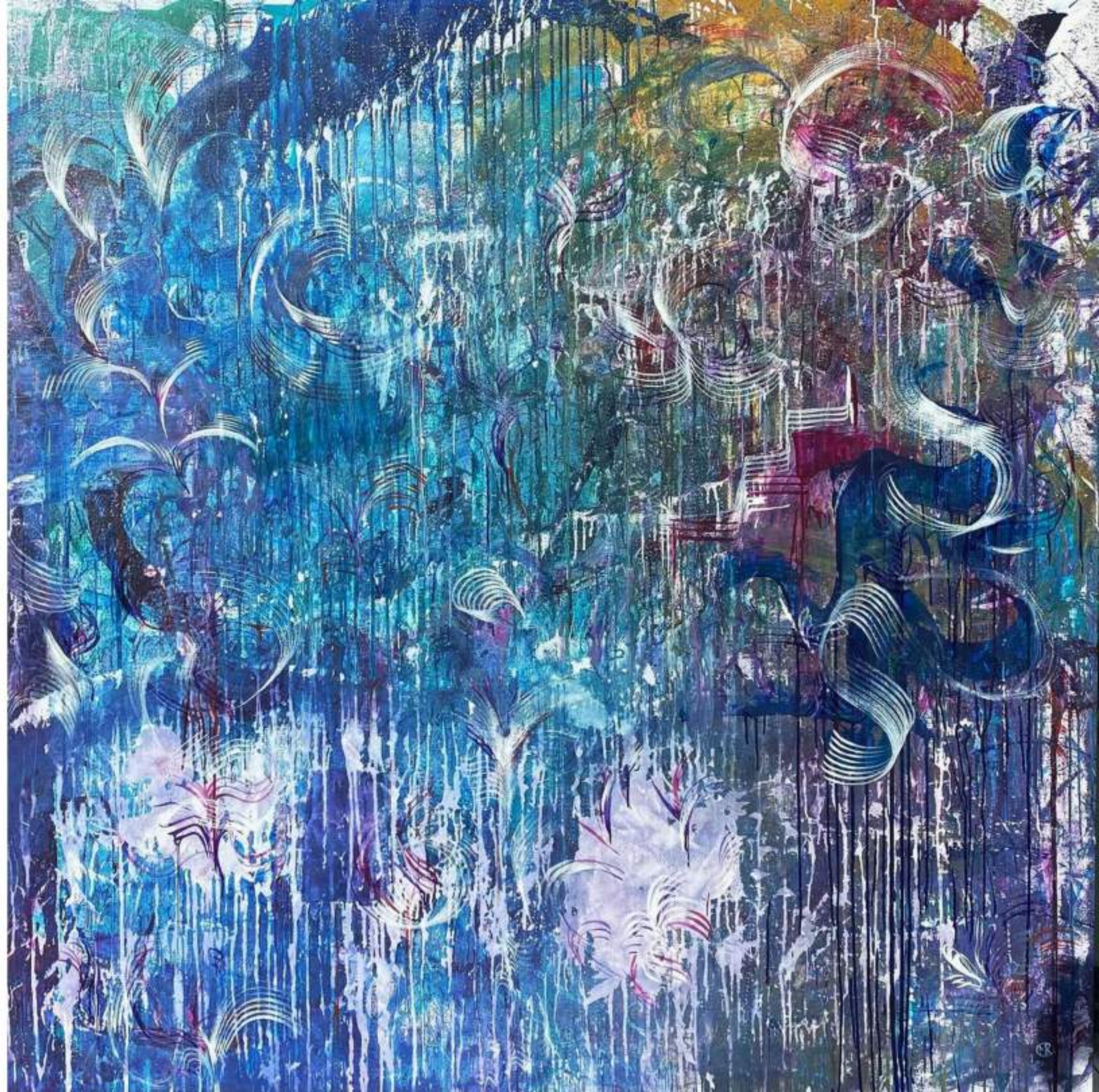


## **Sound of Silence**

180x180 cm

acrylic on canvas

Coral reefs are the ocean's rainforests, the most complex aquatic ecosystems. 25% of aquatic life lives on coral reefs. The distribution of corals is determined by the sea temperature, water clarity and solar radiation. They can respond to changes by bleaching. They lose their colour if the symbiotic algae in their tissues are stressed and having a reduction in photosynthetic pigments. White corals can recover if the stress effect doesn't persist for long periods, but, if the algae in their tissues do not rebuild, they will die. Silence the destrucion, but not by diving.



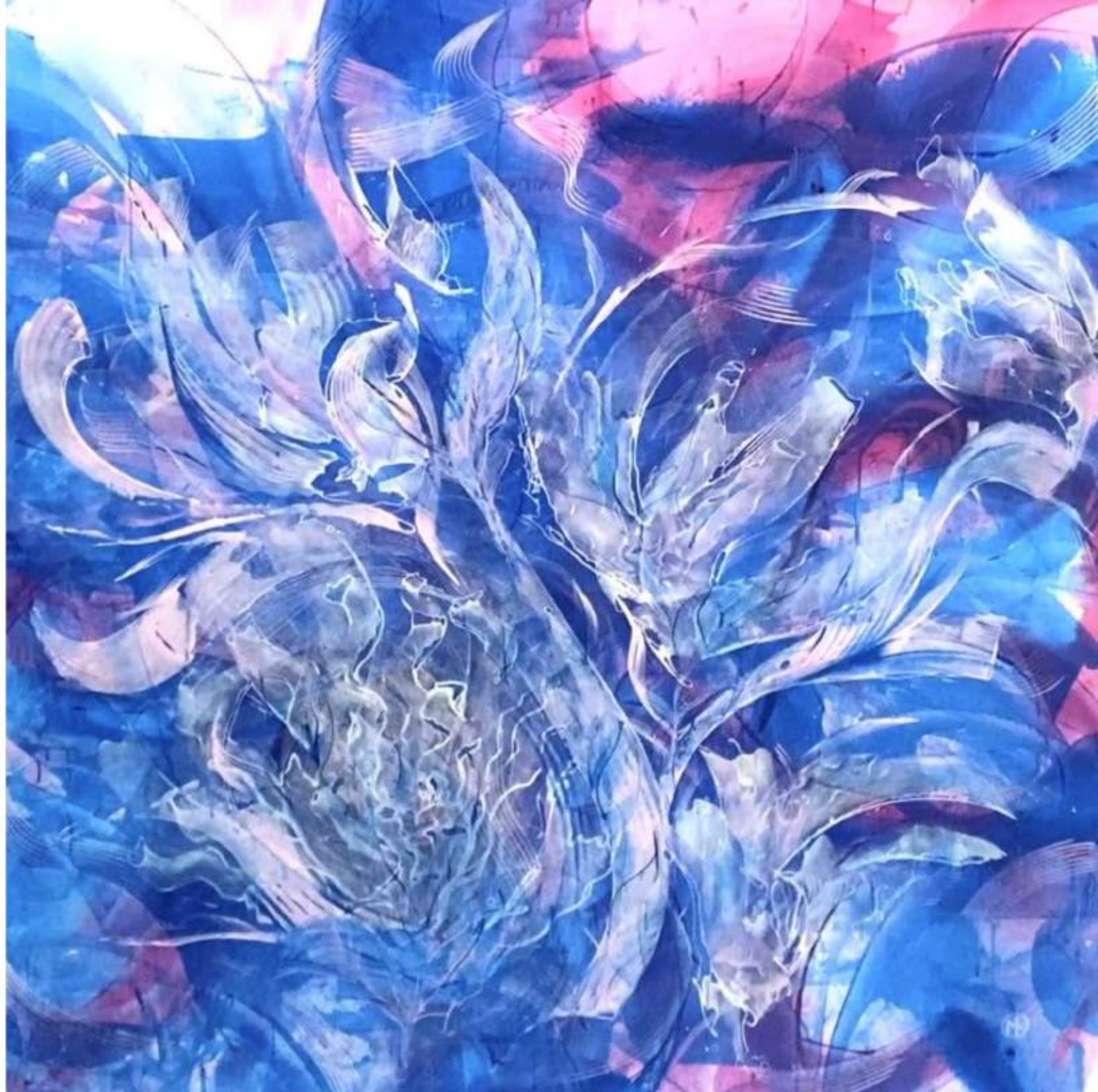


## **Sound of Silence 2.0**

190x190 cm

acrylic on canvas

There were more in my subconscious around the topic, so I followed the path and created another artwork based on the "Sound of Silence" painting.





## **Power of the Soil**

190x190 cm

acrylic on canvas

Excessive soil treatment and spraying with chemicals thins the humus layer ecosystem, destroying the natural soil strength and eviscerate the environment with fertilisers and pesticides. Would your living room decor be beautiful even if you didn't decorate it with artificially coloured bouquets of uniform flower stems?





## **Plastic Face**

190x190 cm

acrylic on canvas

The single-use plastic culture is extremely wasteful of energy and raw materials, and the recycled plastics used in children's toys can contain many banned substances. We believe that we can use as much disposable plastic as we like, because plastic is recyclable. But 91% of plastic waste is not. Banned substances are being reintroduced into the cycle, harming human health again and then escaping into the natural waters. Let's recycle by swapping kids' toys instead of throwing them away, shifting from the idea of vibrant coloured blood running through our veins to the intertwined hair of preloved Barbie dolls.





## Size of the Stratosphere

190x190 cm

acrylic on canvas

The stratosphere is heated by the sun's ultraviolet rays from above, causing some of the oxygen molecules to break down, creating the ozone layer that prevents harmful radiation from reaching the Earth. What happens when this protective layer becomes thinner by shrinking due to greenhouse gas emissions (carbon dioxide and methane)? Extreme weather is expected, from persistent intense rainfall to summer droughts or intense cold winter weather. The sky will fall indeed if we continue like this.





## Garden of Lights

190x190 cm

acrylic on canvas

Hyperurbanisation results in overproduction and an endlessly growing amount of waste. Garbage of used entertainment electronics, lights and glitter is resulted from a vicious cycle of overconsumption. Do we really need lampions to enjoy the garden on a pleasant summer evening?





## **Pastures of Glaciers**

190x190 cm

acrylic on canvas

The snow line on the high mountains is creeping higher every year due to warmer winters. The retreat of glaciers is disrupting ecosystems. Their disappearance affects the biodiversity of the area, as the site may turn green.. Species of animals and plants that previously lived only in the lower, warmer parts of the landscape will appear. The photosynthesis of the area may reduce the carbon dioxide content of the air, but it will accelerate the melting process even more.





## Traces of the Jungle

190x190 cm

acrylic on canvas

The Amazon jungle covers half the world's rainforests. It stores large amounts of carbon and has a high biodiversity. The 55 million year old rainforest faces an uncertain future in few decades, mainly due to the effects of climate change and deforestation: it could partially turn into savannah. There is a growing global demand for soya and cattle farming, and Brazilian farmers have access to the land they need in the Amazon. Salad is also tasty, get really friendly with it if you haven't already.





## Field of Pollination

190x190 cm

acrylic on canvas

Pollination of flowers is essential for the survival of wildlife.. Human activities threaten bees.. Intensive cultivation, frequent mowing of meadows, and the use of pesticides are all significant factors in reducing biodiversity. Habitats of wildflower strips help the process. Earthworms and insects accelerate mineralisation of nutrients from the soil. Let them do their job.





## **Mirror of the glasshouse**

190x190 cm

acrylic on canvas

About half of the sunlight reaching the planet is absorbed by the planet's surface. The sunlight is converted into heat energy and then tries to escape in the form of infrared radiation, but some of this is blocked by the atmospheric layer of greenhouse gases. Look in the mirror on a hot summer day. Can you see the future you are creating in the heat waves?





## **Atlas of Clouds**

190x190 cm

acrylic on canvas

Pollutant emissions from transport vehicles, smoke from industrial activity and building heating equipment are major contributors to rising air pollution. The most significant cause of industrial air pollution is energy production. Wind can freshen the air, but after a while it does not have enough power to deal with the accumulated dust and soot, so the CO<sub>2</sub>, NO<sub>2</sub> and toxic metals released into the air become smog, destroying wildlife. Leave the emission of black clouds to volcanoes, known to nature for few 100 million years.





**Net of Microfibres**

190x190 cm

acrylic on canvas





## Land of Glaciers

190x190 cm

acrylic on canvas

Much of the Earth's freshwater is stored frozen in glacial ice. If glaciers recede, sea levels will rise and desertification will occur. The disappearance of glaciers has an impact on the biodiversity of the area, so that the location of mountain glaciers can be cleared of vegetation. This only accelerates the melting process.





## **River of Pills**

190x190 cm

acrylic on canvas

Plastic toxins, chemicals, pharmaceuticals and oily substances are most often responsible for the pollution of living water. Their effect on the surface colour of rivers in the sunshine is both stunning and terrifying. Just like the effect of those mass-produced pills with their promised impact on our quality of life. Do they really improve it?





## **Lung of the Sea**

190x190 cm

lacrylic on canvas

Neptune grass is the oldest living thing in the world. One hectare of this seagrass can absorb as much carbon dioxide as 15 hectares of rainforest. They act as the lungs of the Mediterranean Sea because of the large amounts of oxygen they produce. In 100 years, 30% of them have died out. Thanks to Posidonia, we can bathe in the stunningly turquoise waters when docking the luxury yachts Take a deep breath of fresh sea air before splashing about and think about going out diving in a rowing boat next time.







"Two Graces" Exhibition  
Beijing, China, 798 Art Zone, Space Zero Gallery  
December 2024.





"Two Graces" Exhibition  
Beijing, China, 798 Art Zone, Space Zero Gallery  
December 2024.















# the artist's message

I'd love to change the world, but I don't know what to do, so I'll leave it up to you\* by raising questions. So that you can find solutions.

I believe that the subject global environmental problems can be reversed and due to mother nature's resilience, human, nature and A.I. can live in harmony in the future.

1 January 2024

Major Krisztina

*\*Lyrics from the song 'I'd Love to Change the World' by the British blues rock band 'Ten Years After's. from their 1971 album 'A Space in Time'.*







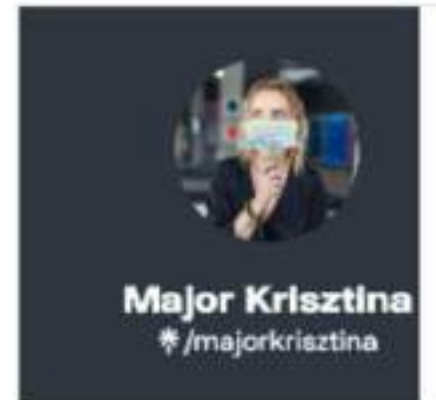
[www.majorkrisztina.hu](http://www.majorkrisztina.hu)



**Instagram (@majorkrisztina.hu)**

Instagram photos and videos

 [instagram.com](https://www.instagram.com/majorkrisztina)



**Major Krisztina**  
✦ /majorkrisztina

**Major Krisztina | Instagram, Facebook, TikTok**

View majorkrisztina's Linktree to discover and stream music from top platforms like YouTube,...

 [Linktree](#) / Jan 8



